

# Ingest Machine

Multi-channel ingest software with real-time encoding for Avid workflow

## Product Description

The Ingest Machine (IM) is a professional ingest solution in Windows environment to capture multiple channels:

- IM encodes streams in Avid MXF and QuickTime format with independent resolution control for each channel.
- IM records clips with proxy stream.
- IM supports Avid metadata for each channel and will optionally check in clips in the Avid Interplay™ database.
- IM stores clips on Avid Unity/ISIS, EditShare or Quadrus shared storage, and optionally on a local disk attached to the ingest workstation.
- IM provides “Frame-Chase-Editing” capability for Avid Media Composer and Final Cut.
- IM manages deck using RS-422 VTR control by Sony protocol for frame-accurate capturing.
- IM provides batch scheduling for deck and for live sources.
- IM extracts timecode from audio channel or provides the “time of day” timecode for synchronization.
- IM provides monitoring for 16 Audio VU/peak levels.
- Depending on the resolution and on the workstation hardware, up to 8 streams can be captured simultaneously per workstation and more workstations are clustered together to increase the simultaneous ingest channel count.



## Technical Specification

Input Hardware:

- “BlackMagic DeckLink Studio 2” cards  
SD/HD-SDI, HDMI, composite, component, S-Video

Formats (Avid MXF and QuickTime):

- Uncompressed
- DV25/DVCPRO25/50/DVCPROHD
- MPEG IMX 30/40/50
- Avid DNxHD

Proxy format: 15:1s

Audio:

- PCM (48kHz -16/24-Bit, up to 16 channels per input)

Integration:

- Quadrus storage and MAM solutions
- Editshare storage
- Avid Interplay and Unity/ISIS storage
- Any generic storage

Timecode:

- SMPTE RP188/DVITC
- Audio extraction/Time of day
- RS-422 timecode for deck control

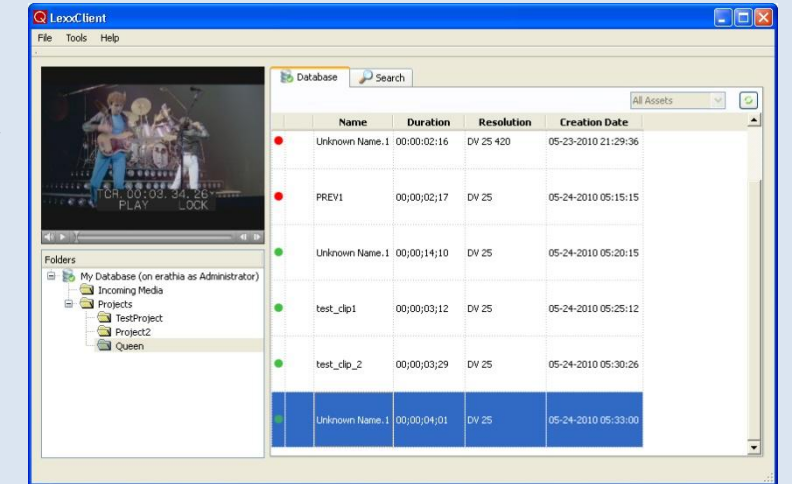
# Quadrus MAM

Clip management software solution in the Windows environment for Avid workflow

## Product Description

Quadrus Media Asset Management (QM) is a professional clip management solution in Windows environment.

- QM provides a list of available clips with an easy preview capability.
- QM allows to move, copy, rename and delete clips with intuitive graphical user interface.
- QM searches for clips with name, recording date, metadata entries.
- QM supports clip metadata editing.
- QM interface allows clip placement to Avid Media Composer bin by “drag and drop” operation.



## Technical Specification

Server installation environment:

- Windows Server 2008 R2 64-Bit

Client:

- Windows 7 32/64-Bit
- Windows XP SP2 32-Bit

# Shared Storage

The software solution for true Avid project and media sharing

## Product Description

Quadrus Shared Storage (QS) software allows Media Composer to recognize NAS with QS installed as a true “Unity like” shared storage, enabling project/media sharing capabilities and bin locking features. QS is licensed per NAS server, it supports as many clients as will fit, up to the limits of the storage size and network bandwidth.

## Technical Specification

Server:

- Windows Server 2008 R2 64-Bit

Client:

- Windows 7 64-Bit
- Windows XP SP2 32-Bit

