

EDIT

***io* EXPRESS**

Portable Video Audio I/O Interface.
Quality in a Box. For Mac/PC.



Because it matters.

AJA[®]
VIDEO SYSTEMS

io EXPRESS

Io Express is the perfect Mac or PC interface for anyone who needs a quality portable monitoring and mastering solution when working with Apple ProRes 422 and Apple ProRes 422 (HQ), XDCAM HD, DVCPRO HD, and more. Built small and robust, Io Express is ideal for use with Ki Pro and a laptop for onset editing and playout.

Featuring full 10-bit, broadcast-quality HD to SD hardware down-conversion and automatic HD/SD 12-bit component analog output, Io Express offers conversion flexibility all the time - during ingest or playback.

Features

Io Express

- HD/SD-SDI input/output
- HDMI v1.3a input/output with Deep Color support at 30 bits per pixel
- 10-bit HD/SD Component Video Output
- 10-bit HD to SD Hardware Downconvert
- 2-Channel RCA audio output
- LTC input/output (selectable LTC Input/Reference Video Input)
- RS422
- Available with either Expresscard interface for laptops or 1-lane PCIe interface for towers
- For Mac OSX and Windows 7/XP/Vista
- Support for Final Cut Studio and Adobe Creative Suite
- Small, portable case design
- 1-meter PCIe tether cable
- 12v DC power supply
- Rackmount kit optional
- AJA 3-year warranty

IO EXPRESS

Pick a Workflow. Pick a Platform. See the Quality.



IO Express with ExpressCard adapter for laptops

IO Express with PCIe adapter for Mac Pro and PC Towers



Ki Pro

Use IO Express with Ki Pro for portable onset editing/playout

Freedom

Looking for a portable, rugged, broadcast-quality interface for Mac or PC? IO Express is the ideal any-platform solution for uncompressed capture and file-based support. Give yourself the freedom to use applications on different platforms with a single interface, or collaborate with users on opposite platforms, passing assets without having to render each time.

If you work with a wide variety of formats, frame rates and audio/video sources, IO Express provides the connectivity you need. With its small footprint it offers big features, like 10 or 8-bit uncompressed video, HDMI I/O, HD/SD-SDI I/O with 8 channels of embedded audio, analog component video (SD/HD) or composite output, 2-channel unbalanced audio output, and broadcast quality hardware-based down-conversion for flexible post production. The HDMI I/O is v1.3a at 30 bits per pixel, providing ideal support for the very latest 10-bit monitors.

On a Mac

Io Express and its quality AJA OSX QuickTime driver offer support for Final Cut Studio and most professional video applications (including those needing Core Audio support). Some of the applications you can use with Io Express include:

Apple Final Cut Pro, Color, and Soundtrack	Adobe PhotoShop (via AJA plug-in)
Adobe Premiere Pro (via AJA plug-in)	AJA TV
Adobe After Effects (via AJA plug-in)	VTR Xchange

In addition to working with 3rd-party OSX applications, Io Express ships with the AJA Control Panel, an application used to select the input audio/video source, configure down-conversions and much more. Other useful utilities are also provided, such as the AJA Data Rate Calculator, useful for calculating storage and bandwidth requirements, and AJA System Test, useful for benchmarking storage.

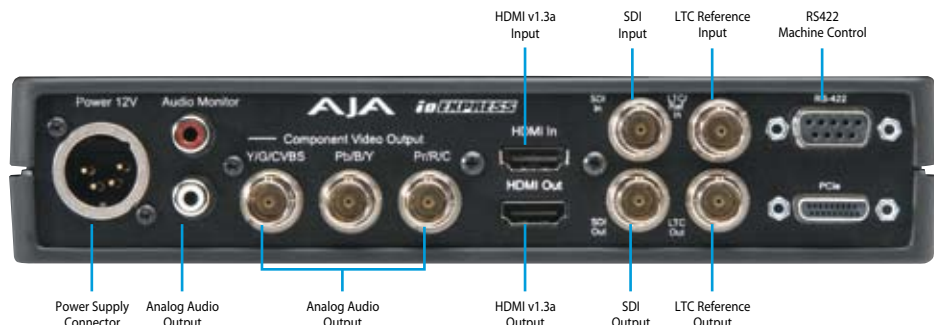
On a PC

Io Express and its Windows 7, XP and Vista drivers, support a wide array of applications both natively and via supplied plug-ins. Applications supported include:

Adobe Premiere Pro (via AJA plug-in)	Eyeon Fusion 64 bit
Adobe After Effects (via AJA plug-in)	CineForm Prospect HD
Adobe PhotoShop (via AJA plug-in)	CineForm Prospect 4K
Drastic Media NXS	CineForm Neo HD
Sony Vegas	CineForm Neo 4K
Autodesk Combustion	AJA Machina

AJA Io Express software works with all typical PC file formats—including DPX, Cineon, TGA, TIFF, BMP, YUV, AVI or QuickTime™. For Windows utilities, AJA provides PC versions of the AJA Data Rate Calculator and AJA System Test utilities mentioned earlier.

Connectivity



Video Connectivity

Io Express provides exactly what you need for portable I/O, without superfluous extras you don't need. Connectors on the rear panel support professional broadcast cameras and devices. For SDI video, the box features HDMI 1.3 I/O plus 3G/HD/SD-SDI I/O. In addition there are connections for Genlock or LTC input and a loop-through output, and three BNCs for component SD/HD analog video output. The high quality deep color HDMI input and output allows interfacing with low-cost camcorders and HD monitors. A 9-pin connector for RS-422 machine control gives you professional deck control.

With all these connections you can connect to just about anything—whether you're using BetacamSP, Digital Betacam, HDCAM, DVCPRO50, DVCPRO HD, D5 —or any other professional video device.

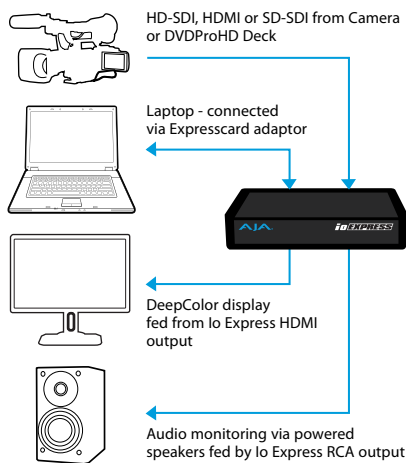
Audio Connectivity

Io Express offers support for both 8-channel HDMI and SDI embedded digital audio or 2 channels of consumer analog audio via two RCA connectors. With these connections, it's easy to hook up a digital audio mixer or DAW output via BNC connections. For multi-channel audio mastering, the 8-channel SDI embedded 24-bit 48kHz audio provides pristine quality.

Ideal for all workflows

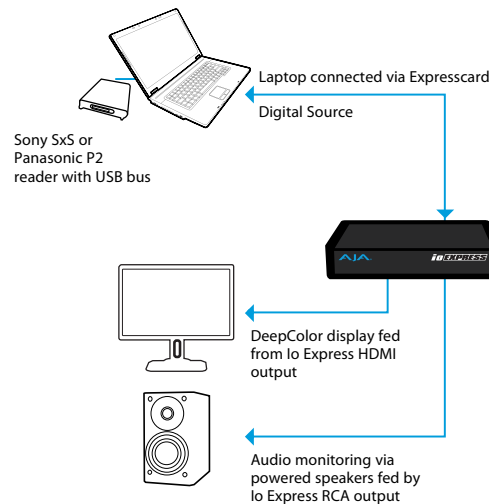
Io Express can go where you go with a laptop or tower and editing software of your choice. A rear panel PCIe connector connects to laptops via an Expresscard, or to a Mac Pro or Windows workstation via a PCIe card (either configuration can be ordered with Io Express).

INGEST FROM ANY DIGITAL SOURCE



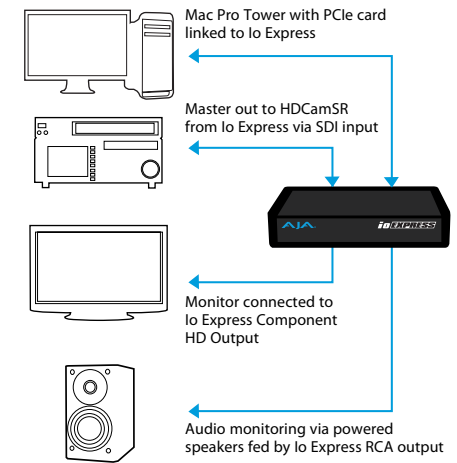
Connect your digital sources via SD/HD SDI or HDMI to Io Express for capture to a variety of formats.

EDIT AND MONITOR WITH FILE-BASED EASE



Capture, edit and playback your file-based acquisition sources with full 10-bit quality to DeepColor monitors.

MASTER YOUR CREATIVITY TO DIGITAL



Master to any Digital or Analog deck through high-quality professional SDI or Component outputs.

Specifications

Io Express

Formats

525i 29.97
625i 25
720p 50
720p 59.94
720p 60
1080i 25
1080i 29.97
1080i 30
1080PsF 23.98
1080PsF 24
1080P 23.98
1080P 24
1080P 25
1080P 29.97
1080P 30

Video Input

Digital:

8- or 10-bit HD/SD SDI, SMPTE-259/292/296/424, 1 BNC
HDMI v1.3, 30 bits/pixel, RGB or YUV, 2.25 Gbps, SD, HD

Video Output

Digital:

HD/SD SDI, SMPTE-259/292/296/424, 1 BNC HDMI v1.3, 30 bits/
pixel, RGB or YUV, 2.25 Gbps, SD, HD

Analog:

Component:
SMPTE/EBU N10, Betacam 525 line, Betacam 525J, RGB
12-bit D/A, 8x oversampling
Analog SD and HD Output, 12 bits, BNC:
HD: YPbPr, RGB SD: YPbPr, RGB (component mode)
Composite/YC (composite mode)

Hardware Down-conversion, 10-Bit

Anamorphic: full-screen
Letterbox: image is reduced with black top and bottom added
to image area with the aspect ratio preserved
Crop: image is cropped to fit new screen size

Audio Input

Digital:

24-bit SMPTE-259 SDI embedded audio, 8-ch, 48 KHz
synchronous

Audio Output

Digital:

24-bit SMPTE-259 SDI embedded audio, 8-ch, 48 KHz
synchronous

Analog:

2-channel unbalanced output (RCA-jack)

Reference Input

Color Black or Tri-level sync
LTC Input (on Reference input)

Machine Control

RS-422 9-pin connector

Incredible 3 Year Warranty

AJA Video warrants that Io Express products will be free from defects in materials and workmanship for a period of three years from the date of purchase.

About AJA Video Systems, Inc.

Since 1993, AJA Video has been a leading manufacturer of video interface and conversion solutions, bringing high-quality, cost-effective digital video products to the professional broadcast and post-production markets. AJA offers the Io, KONA and XENA desktop video products, miniature stand-alone converters, and a complete line of rack mount interface and conversion cards and frames. With a headquarters and design center located in Grass Valley, California, AJA Video offers its products through an extensive sales channel of dealers and systems integrators around the world. For further information, please see our website at www.aja.com

Because it matters.



AJA Video Systems Inc.

Grass Valley, California

www.aja.com • sales@aja.com • support@aja.com