



G-RAID₂ - Award Winning RAID 0 Storage System



G-Technology (G-Tech) manufactures the industry's most comprehensive line of external disk storage solutions designed for professional content creation applications. Our USB, FireWire, eSATA, SCSI and Fibre Channel systems support all levels of audio/video production. G-Tech's focus on technology, quality and design has resulted in disk storage solutions with unmatched performance, reliability and style..

G-Technology Inc.
Performance | Reliability | Style

www.g-technology.com

G | ADVANTAGE



G-SPEED is designed to support uncompressed SD and HD editing with professional content creation applications such as Final Cut Pro HD.



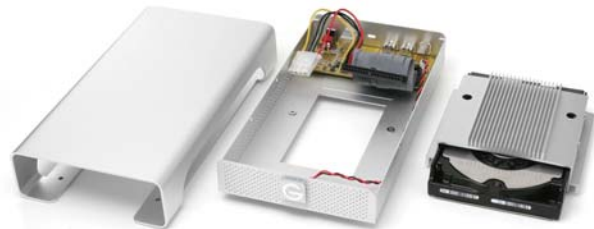
Heat is death to hard drives so every G-TECH product incorporates a high-performance cooling system to ensure reliable operation and data integrity.

Why should you consider using a G-Tech product? It's simple. You won't find a better made, better performing, better looking, or more reliable external disk storage system *anywhere*. We know because we looked around and saw what was available – and we knew we could do better. Much better. So we built our products from the **highest quality components** – aircraft grade aluminum and the highest quality electronics and hard disk drives.

We believe in performance. That's why every one of our storage solutions must pass our rigorous test procedures before it's shipped. Our G-SPEED, G-RAID, G-RAID Pro and G-SATA units are designed to support professional multi-stream uncompressed video editing environments and meet guaranteed real-time video playback specifications.

We also believe in reliability. And the key to ensuring reliable operation is to use the best components and then keep them cool. That's why every G-Tech external storage solution features a built-in cooling system.

We know we've built the **best external storage systems out there.** Once you use a G-Tech product, we're sure you'll agree.



G-TECH products are made from the highest quality components and are machined to exact specifications.

G-SPEED XL



G-SPEED



G SPEED

High-Performance Storage Solutions for SD and HD Production

G-SPEED is the world's most cost-effective RAID storage solution for high-end professional content creation applications. G-SPEED features a **4Gbit Fibre Channel** or **Ultra 320 SCSI** interface and is available in a compact desktop enclosure with 6 drives or a dual channel 3U rackmount enclosure (G-SPEED XL) with 16 drives. G-SPEED can be configured as a JBOD, RAID 0, 1, 3, 5 or RAID 6. This flexibility enables the system to be tuned to the required level of performance and fault-tolerance necessary to support your application. G-SPEED supports multi-stream SD



and uncompressed HD work flows - including **real-time playback of 2K DPX sequences.**

G-SPEED's built-in Web GUI is used to configure and monitor the status of the system including power supply voltage, fan RPM and the temperature of the RAID controller & hard drives.



G-SPEED can be configured and monitored via the system's front panel LCD.



G-SPEED features hot-swappable 7200 RPM, SATA II disk drive modules each with up to 32MB of cache.

G-SPEED comes standard with a 300W fixed power supply. A redundant power supply option with two hot-swappable 250W power modules is available. G-SPEED XL comes standard with redundant power.

SD HD 2K

G-SPEED supports multi-stream SD, HD and 2K film resolutions and is compatible with the leading editing systems for Mac and PC.



G-SPEED features 4Gbit connectivity and utilizes Small Form-Factor Pluggable (SFP) LC optical transceivers. The system connects to your workstation using thin optical cabling.



The SCSI version of G-SPEED features Ultra320 connectivity and supports daisy-chaining of additional units.

SPECIFICATIONS (G-SPEED):

Disk Drives: (6) 7200 RPM 8/16MB cache, SATA II
Controller: Hardware RAID 0, 1, 3, 5, 6 and JBOD
Interface: 4Gbit Fibre Channel, SFP to LC or Ultra320 SCSI
Size: (LxWxH) 11.3" x 6.5" x 13.6"/235 x 130 x 73mm
Weight: 34 lbs/15.4 kg

SPECIFICATIONS (G-SPEED XL):

Disk Drives: (16) 7200 RPM 8/16MB cache, SATA II
Controller: (2) hardware RAID 0, 1, 3, 5, 6 and JBOD
Interface: Dual 4Gbit Fibre Channel, SFP to LC
Size: (LxWxH) 17.5" x 19.5" x 5.25"/446x495x133mm
Weight: 54 lbs/24.5 kg

SYSTEM REQUIREMENTS:

Fibre Channel or Ultra SCSI 320 equipped computer Ethernet port and Web Browser for GUI connection





G RAID₂

Professional RAID 0 Storage Solutions with Triple Interface

G-RAID₂ is the next generation in the award winning line of storage solutions from G-Tech! G-RAID₂ is specifically designed to support professional content creation applications including audio/video editing, 2D/3D animation and digital imaging. G-RAID₂ features a new triple interface – FireWire 400, FireWire 800 and USB 2.0 ports – for universal connectivity and the latest 7200 RPM SATA II drives mated to an Oxford 924-based hardware RAID 0 controller. G-RAID₂ supports the playback of multiple layers of video in real-time and offers unmatched performance and reliability.



Awarded  by MacWorld

Number of real-time video streams supported*



*when attached to a FireWire 800 port

G-RAID₂ is specifically designed to support professional multi-stream video editing applications like Apple Final Cut Pro and Adobe Premiere Pro.

G-RAID₂ is equipped with a small and quiet cooling fan to ensure reliable operation and data integrity.



FireWire 400, FireWire 800 and USB 2.0 ports for universal connectivity to Mac's or PC's

SPECIFICATIONS:

Disk Drives: (2) 7200 RPM 8/16MB cache, SATA II

Controller: Hardware RAID 0 - Oxford 924

Interface: (1) FireWire 400, (2) FireWire 800 and (1) USB 2.0

Size: (LxWxH) 9.25" x 5.125" x 2.875"
235 x 130 x 73 mm

Weight: 3.85 lbs/1.75 kg

SYSTEM REQUIREMENTS:

FireWire 800 / USB 2.0 Operation:

Mac OS X 10.3.x or higher,
Windows 2000/XP

FireWire 400 Operation:

Mac OS 9.2 or higher,
Windows 2000/XP





G RAID mini

Portable RAID 0 Storage Solutions for Editing on the Go!

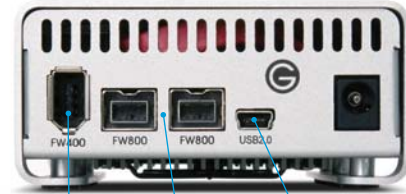
We have taken the award winning features our full-sized G-RAID and shrunken them down in to a portable format designed for mobile content creation applications. G-RAID mini is the ideal storage solution for audio/video editing on the go or traveling with large amounts of data in a compact form factor. G-RAID mini incorporates the latest 5400 or 7200 RPM SATA hard drives each with 8MB of cache and features a triple interface - FireWire 400, FireWire 800 and USB 2.0 ports - for universal connectivity to Mac and PC workstations and laptops. **G-RAID mini is FireWire bus powered eliminating the need for an AC power supply.**



Awarded 
by MacWorld



*Using 7200RPM drives attached to a FireWire 800 port



FireWire 400, FireWire 800 and USB 2.0 ports
for universal connectivity to Mac's or PC's

G-RAID mini is equipped with a small and quiet cooling fan to ensure reliable operation and data integrity.



SPECIFICATIONS:

Disk Drives: (2) 5400 or 7200 RPM
8MB cache, SATA

Controller: Hardware RAID 0 - Oxford 924

Interface: (1) FW 400, (2) FW 800 and (1) USB 2.0

Size: (LxWxH) 5.875" x 3.25" x 1.5" / 149 x 82.6 x 38 mm

Weight: 1.1 lbs / .5 kg

SYSTEM REQUIREMENTS:

FireWire 800 / USB 2.0 Operation:
Mac OS X 10.3.x or higher,
Windows 2000/XP

FireWire 400 Operation:
Mac OS 9.2 or higher,
Windows 2000/XP

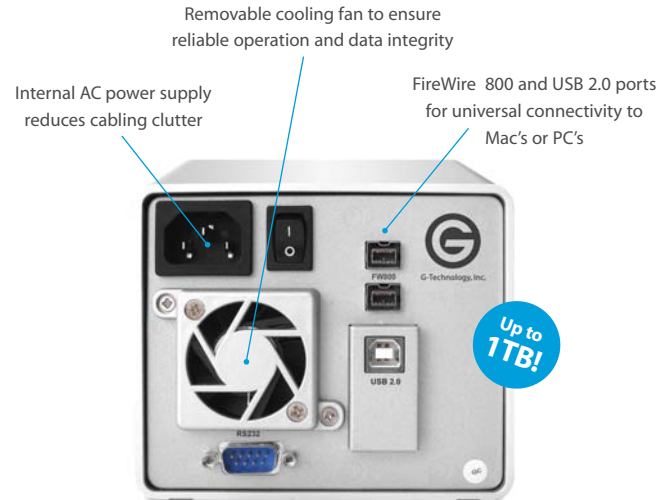
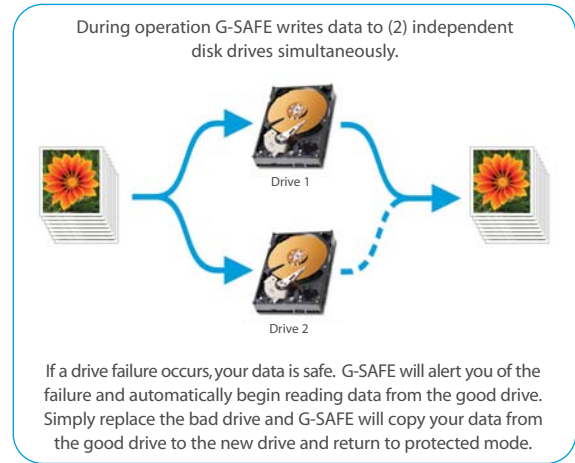




G-SAFE

RAID 1 (Mirrored) Storage Solutions for Peace of Mind

G-SAFE is the ideal storage solution to safeguard digital photo files downloaded from flash memory cards. G-SAFE offers the ultimate in peace of mind by simultaneously writing to two independent hard disk drives providing instant back up of the images as you save them. And unlike single drive backup systems, if a drive failure occurs your images are safe and accessible. G-SAFE features (2) removable drive modules for easy replacement of disk drives, FireWire 800 and USB 2.0 ports and a front panel LCD for system status and configuration.



SPECIFICATIONS

Disk Drives: (2) Hot-Swappable, 7200 RPM
8/16 MB, SATA II

Controller: Hardware RAID 1

Interface: (2) FireWire 800, (1) USB 2.0

Size: (LxWxH) 4" x 4.9" x 7.6" / 102 x 127 x 193mm

Weight: 10 lbs/4.5 kg

SYSTEM REQUIREMENTS

FireWire 800 / USB 2.0 Operation:
Mac OS X 10.3.x or higher,
Windows 2000/XP

G-Tech offers the most comprehensive



line of external disk storage solutions for Content Creation



Performance | Reliability | Style



G-SATA

High-Performance Two Drive eSATA Storage Solution

G-SATA is a high-performance Serial-ATA (SATA) storage solution designed to support professional content creation applications including audio/video editing, graphic design and digital imaging. G-SATA features two 7200 or 10,000 RPM SATA II hard drives and provides data transfer rates up to 135 MB/second. The system may be initialized as individual drives or configured as a software RAID 0 (striping) for performance or RAID 1 (mirroring) for data security. In a RAID 0 configuration, G-SATA supports the simultaneous playback of multiple streams of uncompressed video with real-time effects and audio.



Number of real-time video streams supported*



* Using 10,000 RPM drives striped as a RAID 0

G-SATA is specifically designed to support professional multi-stream video editing applications like Apple Final Cut Pro and Adobe Premiere Pro.

G-SATA includes a 2-port eSATA PCIe adapter and (2) eSATA cables



G-SATA is equipped with a small and quiet cooling fan to ensure reliable operation and data integrity.



(2) 3 Gbit/sec eSATA Ports



SPECIFICATIONS:

Disk Drives: (2) 7200 or 10,000 RPM, 8/16 MB cache, SATA II

Interface: SATA II, 3 Gbit/sec

Size: (LxWxH) 9.25" x 5.125" x 2.875"
235 x 130 x 73 mm

Weight: 3.85 lbs/1.75 kg

SYSTEM REQUIREMENTS:

Mac OS 9.2 or higher,
Windows 2000/XP

eSATA Adapter:
Open PCIe slot
Mac OS 10.4 or higher
Windows 2000/XP



G MINI

Storage Companion for the Mac® mini and Airport® Extreme

G-MINI is the perfect storage companion for the Mac mini and Airport Extreme Base Station. G-MINI compliments the Mac mini and Airport Extreme's stylish designs and is the easy solution to add up to 1TB of storage capacity to manage your digital lifestyle. G-MINI features FireWire 400 and USB 2.0 connectivity for high-speed data transfers, a (3) port FireWire repeater and (3) port USB hub. When connected to the Airport Extreme, G-MINI is the perfect solution for adding shared storage to your wireless network. A variable speed fan and integrated heat-sink provide optimum cooling to ensure reliable and trouble free operation.



G-MINI is equipped with a heat sink and a small, variable speed fan to ensure optimum cooling for reliable operation and data integrity



G-MINI features FireWire 400 and USB 2.0 connectivity with integrated FireWire repeater and USB hub insuring high speed data transfers and flexible expansion for your Mac computer



The G-MINI is the perfect storage add-on for the new Apple Airport Extreme. Just plug in G-MINI and you have instant Network Storage!



SPECIFICATIONS

Disk Drive: 7200 RPM 8/16 MB, SATA II

Interface: USB- (4) USB2.0

Combo - (3) FireWire 400, (4) USB 2.0

Size: (LxWxH) 6.5" x 6.5" x 1.7" / 165 x 165 x 43 mm

Weight: 2.2 lbs/1kg

SYSTEM REQUIREMENTS

USB 2.0 Operation:

Mac OS X 10.3.x or higher,
Windows 2000/XP

FireWire 400 Operation:

Mac OS 9.2 or higher,
Windows 2000/XP



G DRIVE

Professional Storage Solutions for Demanding Applications

G-DRIVE external hard drives offer industry leading performance and are the perfect storage solutions for digital audio and video editing, graphic design, and high-speed data backup. G-DRIVE is also a great place to store your digital photos, MP3s and other important files that you can't be without. G-DRIVE features a fan-less cooling system and the latest technology 7200 RPM hard drives with 8 MB of cache.



Awarded 
by MacWorld

High Performance for Demanding Applications



G-DRIVE is available in two high-performance versions:



FireWire 400 and 800



FireWire 400 and USB 2.0

G-DRIVE incorporates a unique "fan-less" cooling system designed to silently dissipate heat for superior reliability and data integrity.



SPECIFICATIONS:

Disk Drives: 7200 RPM/8MB cache

Interface: (2) FireWire 800 / (1) FireWire 400 or

(2) FireWire 400 / (1) USB 2.0 or (1) USB 2.0

Size: (LxWxH) 9.25" x 5.125" x 1.82"

235 x 130 x 46 mm

Weight: 2.6 lbs / 1.18 kg

SYSTEM REQUIREMENTS:

FireWire 800 / USB 2.0 Operation:

Mac OS X 10.3.x or higher,

Windows 2000/XP

FireWire 400 Operation:

Mac OS 9.2 or higher,

Windows 2000/XP



G-DRIVE Q

Professional Strength Quad Interface Storage Solutions

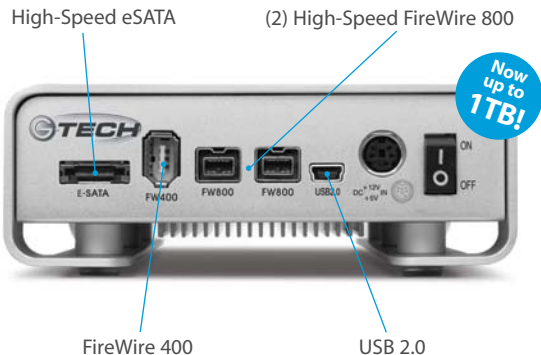
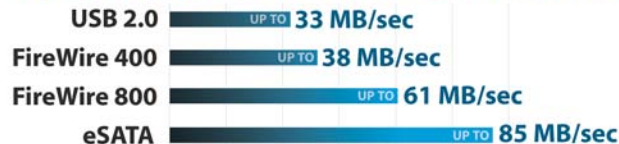
G-DRIVE Q quad interface external storage systems offer the ultimate in flexibility by providing FireWire 400, FireWire 800, USB 2.0 and eSATA ports all in a single unit. G-DRIVE Q is the perfect high-performance solution for storage intensive applications including audio/video editing, digital photography, MP3 libraries and high-speed data back up. The system features a fan-less cooling system and the latest technology 7200 RPM SATA II hard drives with 8 or 16 MB of cache.



Winner of the 2006
MacWorld Editors' Choice Award

Awarded 
by MacWorld

High Performance for Demanding Applications



The industry's first high-performance quad interface storage system for Mac's and PC's.



G-DRIVE Q incorporates a unique "fan-less" cooling system designed to silently dissipate heat for superior reliability and data integrity.

SPECIFICATIONS:

Disk Drives: SATA II, 7200 RPM, 8/16MB cache
Quad-Interface: (1) FireWire 400, (2) FireWire 800, (1) USB 2.0, (1) eSATA
Size: (LxWxH) 9.25" x 5.125" x 1.82"
235 x 130 x 46 mm
Weight: 2.6 lbs / 1.18 kg

SYSTEM REQUIREMENTS:

FireWire 400 Operation:
Mac OS 9.2 or higher,
Windows 2000/XP
FireWire 800 / USB 2.0 / eSATA Operation:
Mac OS X 10.3.x or higher,
Windows 2000/XP





G-DRIVEmini

Ultra-Portable Storage Solutions for People on the Go!

G-DRIVE mini hard drives are the perfect storage solutions for people on the go. Weighing in at less than 9 oz., G-DRIVE mini is the ultra-portable and stylish way to travel with up to 160 GB of storage space for your important documents, MP3s, digital video and digital photo files. G-DRIVE mini is bus powered, eliminating the need to carry an external AC power supply. G-DRIVE mini features a fan-less cooling system and the latest technology 5400 or 7200 RPM hard drives with 8 MB of cache.



Awarded 
by MacWorld



G-DRIVE mini features high-performance FireWire 400 and USB 2.0 connectivity



G-DRIVE mini incorporates a unique "fan-less" cooling system designed to silently dissipate heat for superior reliability and data integrity.



To keep G-DRIVE mini safe when on the road, a protective leather carrying case is included.

SPECIFICATIONS:

Disk Drive: 5400 or 7200 RPM/8MB cache
Interface: (2) FireWire 800 or
(2) FireWire 400 / (1) USB 2.0 or (1) USB 2.0
Size: (LxWxH) 4.9375" x 3.1875" x.875"
125 x 81 x 22mm
Weight: .55 lbs / .25 kg

SYSTEM REQUIREMENTS:

FireWire 800 / USB 2.0 Operation:
Mac OS X 10.3.x or higher,
Windows 2000/XP
FireWire 400 Operation:
Mac OS 9.2 or higher,
Windows 2000/XP





G-Technology Inc.
Performance | Reliability | Style

1653 Stanford Street
Santa Monica, CA 90404
tel 310.449.4599
www.g-technology.com